

Bruneau River



ANGLER AND FISH SURVEY INFORMATION

Austin Wilson – Fisheries Biologist, Elko Field Office
60 Youth Center Road. Elko, NV 89801 (775) 777-2333

General information: Prior to the construction of downstream dams in Idaho, the Bruneau River in Nevada was home to Chinook Salmon and Steelhead making their journey all the way from the Pacific Ocean. However, today the only Salmonids found in the Bruneau River are Redband Trout (a subspecies of Rainbow Trout) and Mountain Whitefish. Speckled Dace, Redside Shiners, suckers, and other native endemic fish are also found in the stream. Generally, anglers catch an average of eight trout per day and the best times of year to fish are in July, following run-off, through October. Fish can easily be caught on flies, lures, and bait such as worms or salmon eggs primarily from the confluence of Meadow Creek upstream to Deer Creek. There is primitive camping on US Forest Service managed lands and at the Bruneau River WMA.

Location: The Bruneau River is located on the west side of Copper Mountain in Elko County, Nevada. Use our FishNV tool (<https://fish.wildlifenv.com/>) to find waters near you, and buy your fishing license at ndowlicensing.com.

Size: Approximately, 50 miles long (within the state of Nevada) and 29 miles of fishable water.

Management: Nevada Department of Wildlife manages the Bruneau River as a wild trout fishery.

Amenities and General Info

- The Bruneau River primary flows through public land (State of Nevada, US Forest Service, and BLM).
- Primitive camping available.

Fishing/Boating Regulations

- Season is open all year, any hour of the day or night.
- Daily limit is 5 Redband Trout and 5 Mountain Whitefish.
- The capture, possession, or use of fish as bait, whether dead or alive or parts thereof, including commercially prepared and preserved baitfish is prohibited other than preserved salmon eggs.
- Aquatic bait (non-fish) may be used only in the water from which it is taken.

Stocking

No stocking occurs because the Redband Trout and Mountain Whitefish populations are self-sustaining.

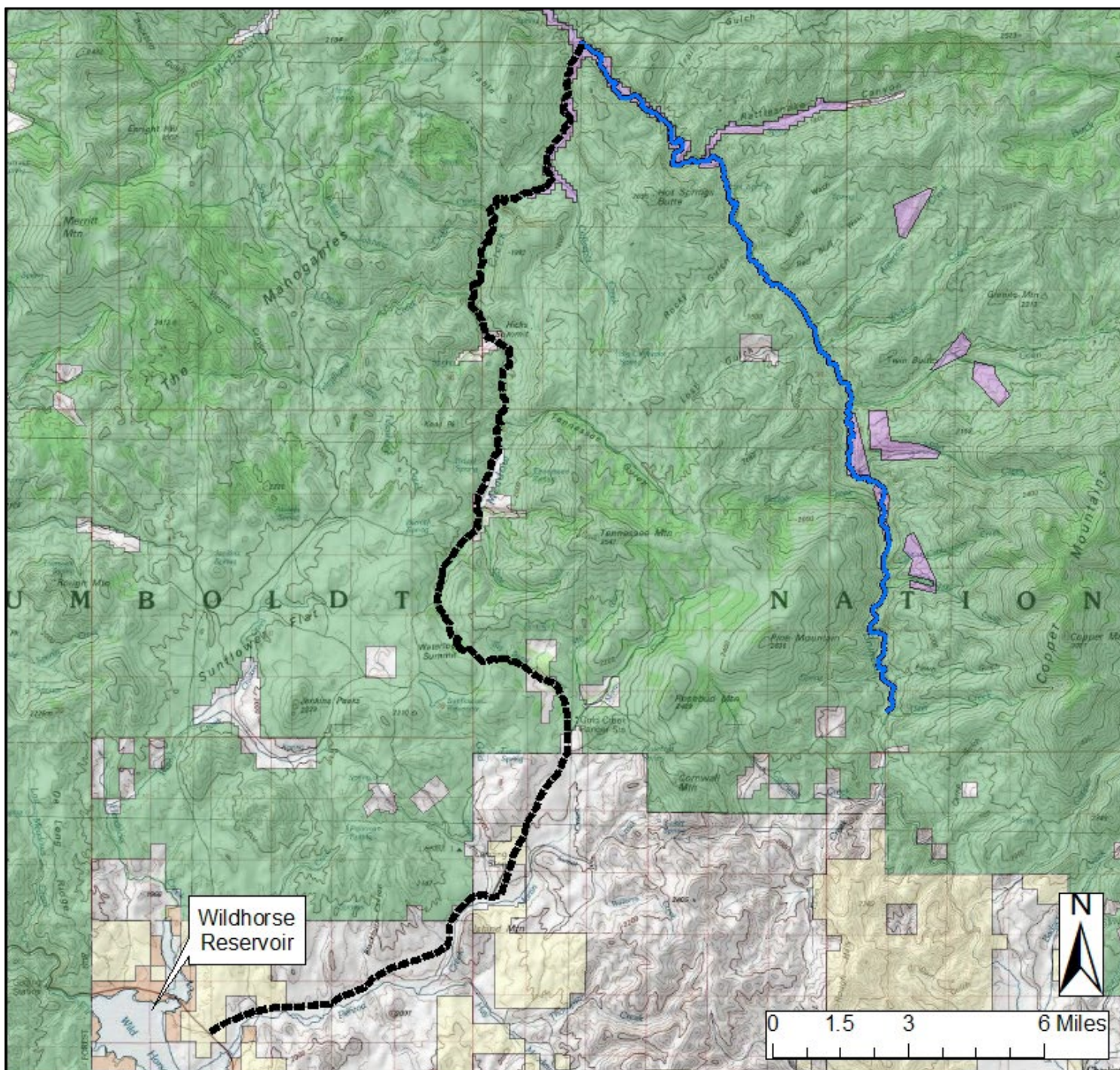
Access

A dirt road parallels a majority of the Bruneau River from Charleston Reservoir downstream to the McDonald Creek confluence (recommend using a 4-wheel drive vehicle).

The Bruneau River road can be accessed from a 24-mile-long road (Gold Creek Road) northeast of State Route 225 at Wildhorse Reservoir or by exiting State Route 225, 55 miles north of Elko at the Charleston-Deeth Road and driving east 21 miles on the maintained dirt road to Charleston Reservoir.








Fishing Forecast

The Bruneau River watershed is 100% of average for snowpack in 2025. Fishing will likely be slower than historic averages because the fishery has been impacted from prior drought years. With the previous two winters having good snowpack, fishing should continue to improve. Fishing later in the spring through fall should remain fair for Redband Trout and Mountain Whitefish; with a large portion of fish being caught in the 5"-10" size class, and a few top end fish breaking the 12"-14" range. Fishing upstream of the Meadow Creek Road should produce better catch rates than downstream of the road due to low flows and warm water temperatures prior to the 2023 winter.



Bruneau River Angler Guide Map

Legend

- | | |
|---|---|
|  Bruneau River |  Bureau of Indian Affairs |
|  Gold Creek Road |  Bureau of Land Management |
|  Bruneau River WMA |  Forest Service |
| |  Private |



March 7, 2024
 Projection: UTM Zone 11 North,
 No warranty is made by the Nevada
 Department of Wildlife as to the accuracy,
 reliability, or completeness of the data for
 individual use or aggregate use with other
 data.