

CATNIP RESERVOIR



ANGLER AND FISH SURVEY INFORMATION

Brad Bauman- Fisheries Biologist, Winnemucca Field Office
705 E 4th Street. Winnemucca, NV 89445 (775)-623-6565 ext 105

General information: Catnip Reservoir is managed as a Quality Coldwater Fishery. This is a remote fishery that receives low angling pressure. Lahontan Cutthroat Trout (LCT) are the only fish present in the reservoir and are stocked annually. LCT range in size from 5 to over 22 inches. Road access is typically good but can be challenging if the roads are wet and muddy. 4-wheel drive vehicles are recommended, but not necessary.

Location: Washoe County, Sheldon National Wildlife Refuge, approximately 46 miles west of Denio Junction. Use our FishNV tool (<https://fish.wildlifenv.com/>) to find waters near you, and buy your fishing license at ndowlicensing.com. Access to Catnip Reservoir has 17 miles of gravel road off SR 140.

Size: 22 surface acres with a capacity of 220 acre-feet.

Management: Nevada Department of Wildlife manages the fishery as a Quality Cold Water Fishery. The United States Fish and Wildlife Service Sheldon National Wildlife Refuge manages the surrounding land. Please observe all rules and regulation of the Sheldon National Wildlife Refuge.

General Info

- Some developed camping with fires pits and tables
- Restrooms
- No boat ramps

Previous stocking

2024

LCT 2,044 7.7 inches

2023

LCT 100 6.0 inches

2022

LCT 5,145 6.2 inches

2021

No Stocking Occurred

2020

LCT 2,171 5.9 inches

2019

LCT 7,880 3.9 inches

LCT 1,154 7.0 inches

Fishing notes

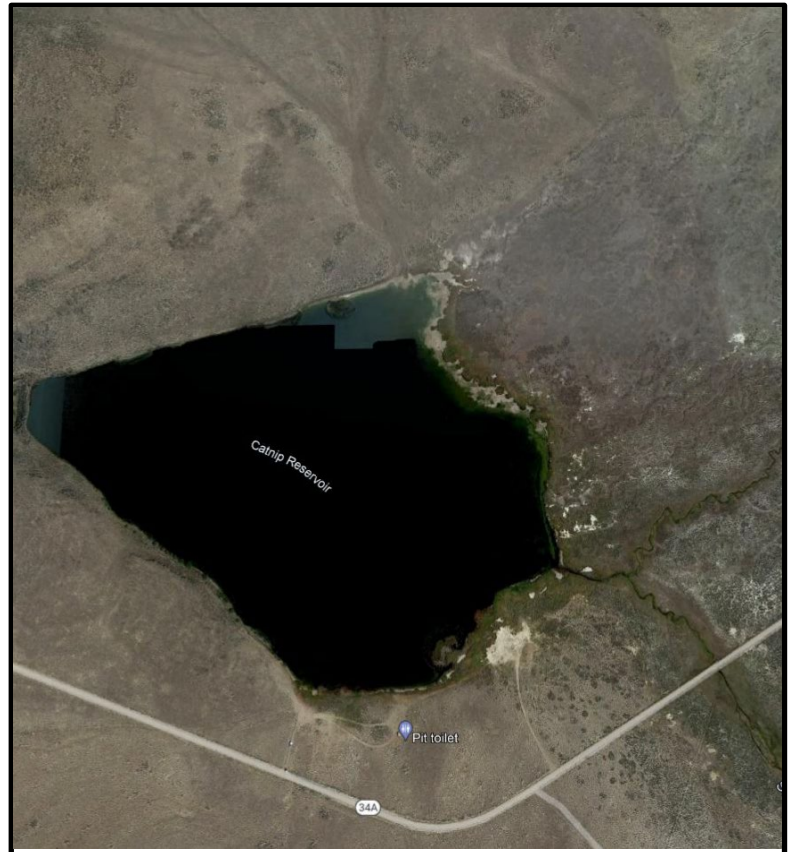
- Best fishing typically occurs in June, September, October.
- Fly angling striping wholly buggers, leach patterns, scuds and bead head nymph patterns is usually successful.
- Midges or balanced leeches under indicators are also successful
- Small spinners such as Mepps and Rooster Tails. Castmaster and small spoons are lures that can be casted from shore or trolled from a small boat.
- Float tubes, small pantoon boats or kayaks are well suited for this reservoir.

Fishing/Boating Regulations

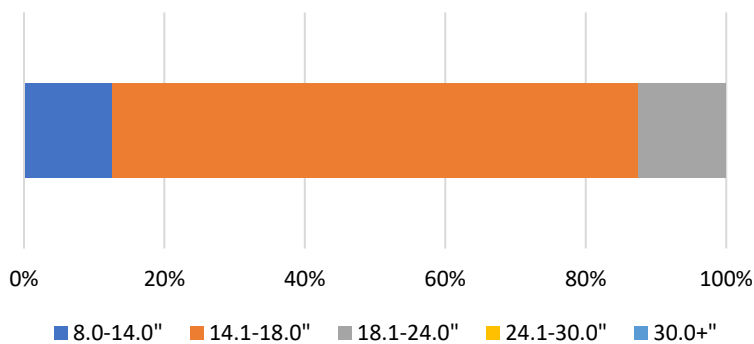
- Season is open year-round
- Limit is 1 LCT
- Artificial flies and lures only
- Single barbless hook
- Vessels must be operated at speeds that leave a flat wake. Electric motors only.

CATNIP RESERVOIR

FISHERY SURVEY DATA - 2024
Brad Bauman – Fisheries Biologist
Winnemucca Field Office



Lahontan Cutthroat Trout Size Structure



5-YEAR ANGLER CATCH RATES
CATNIP RESERVOIR

	fish/hour	fish/angler
2024	0.14	0.29
2023	0.94	2.64
2022	0.94	2.50
2021	0.78	4.00
2020	0.65	4.29
2019	1.11	6.67
Average	0.88	4.02

Biologist Forecast for 2025 – Catnip was stocked with only 100 LCT in 2023 and then stocked with 2,044 LCT in 2024. Catnip is scheduled to be stocked with 3,000 LCT in the spring of 2025. Angler catch rates were low in 2024 due to inconsistent stocking. Consistent stocking of LCT should improve catch rates. The majority of LCT are in the 14-18" size class. Fishing in 2025 is expected to be fair to poor with catch rates being under 1 fish per hour.