

## JARBIDGE RIVER, WEST FORK, EAST FORK AND ITS RESPECTIVE TRIBUTARY STREAMS



**ANGLER AND FISH SURVEY INFORMATION**  
**Austin Wilson- Fisheries Biologist, Elko Field Office**  
**60 Youth Center Road, Elko NV, 89801, 775-777-2333**

**General information:** The East Fork and West Fork of the Jarbidge Rivers (EFJR and WFJR) originate in the high country of the Jarbidge Wilderness and flow north into the Snake River in Idaho. These rivers and their tributaries offer anglers a unique opportunity to catch Bull Trout, Redband Trout, and Mountain Whitefish.

**Location:** The EFJR and WFJR are located approximately 108 miles north of Elko, Nevada. (<https://fish.wildlifenv.com/>) To find waters near you, and buy your fishing license at [ndowlicensing.com](http://ndowlicensing.com).

**Size:** The WFJR has 16 miles of fishable water starting at the headwaters and ending downstream through Jarbidge, NV at the Idaho state line. The EFJR has 15 miles of fishable water starting from the headwaters to the Idaho state line.

**Management:** Fisheries management of the East and West Fork Jarbidge Rivers and their respective tributaries are the management responsibility of the Nevada Department of Wildlife.

### Amenities and General Info

- Forest Service dry camp sites are available near Pine Creek on the WFJR, and at the Slide Creek trailhead on the EFJR.
- Bed and breakfasts and limited hotels are available in Jarbidge.
- Gasoline is available on occasion in Jarbidge.

### Fishing Regulations

- Daily limit is 5 Redband Trout and 5 Mountain Whitefish, possession limit is twice the daily limit.
- Bull Trout are prohibited from any possession and are catch and release only. Please practice safe fish handling and release Bull Trout immediately upon contact.

### Access points

- A network of major trailheads easily accesses various portions of the Jarbidge wilderness.
- WFJR headwater access is found just south of the town of Jarbidge at the WFJR trail head (Pine Creek campground).
- EFJR access is found at the Three-day trailhead near Dave Creek, or the Slide Creek trailhead at the headwaters of Slide Creek.

### Fishing notes

- Anglers wishing to specifically target Bull Trout, will need to use trail heads to access headwater reaches and tributaries where Bull Trout are commonly found.
- Redband Trout are found throughout the entirety of the Jarbidge River system in good abundance. Mountain whitefish are also found throughout the system but in low densities.

### Angling tips/techniques

- Watch your shadow, move slow, approaching from downstream.
- Cover ground, fish small reaches, and move on if not catching fish.
- Various leech, nymph, midge, and dry-fly patterns should be effective. Match the hatch.

# EAST FORK AND WEST FORK JARBIDGE RIVER



## 2025 Fishing Forecast

Austin Wilson- Fisheries Biologist, Elko Field Office  
60 Youth Center Road, Elko NV, 89801, 775-777-2333

### Water Level

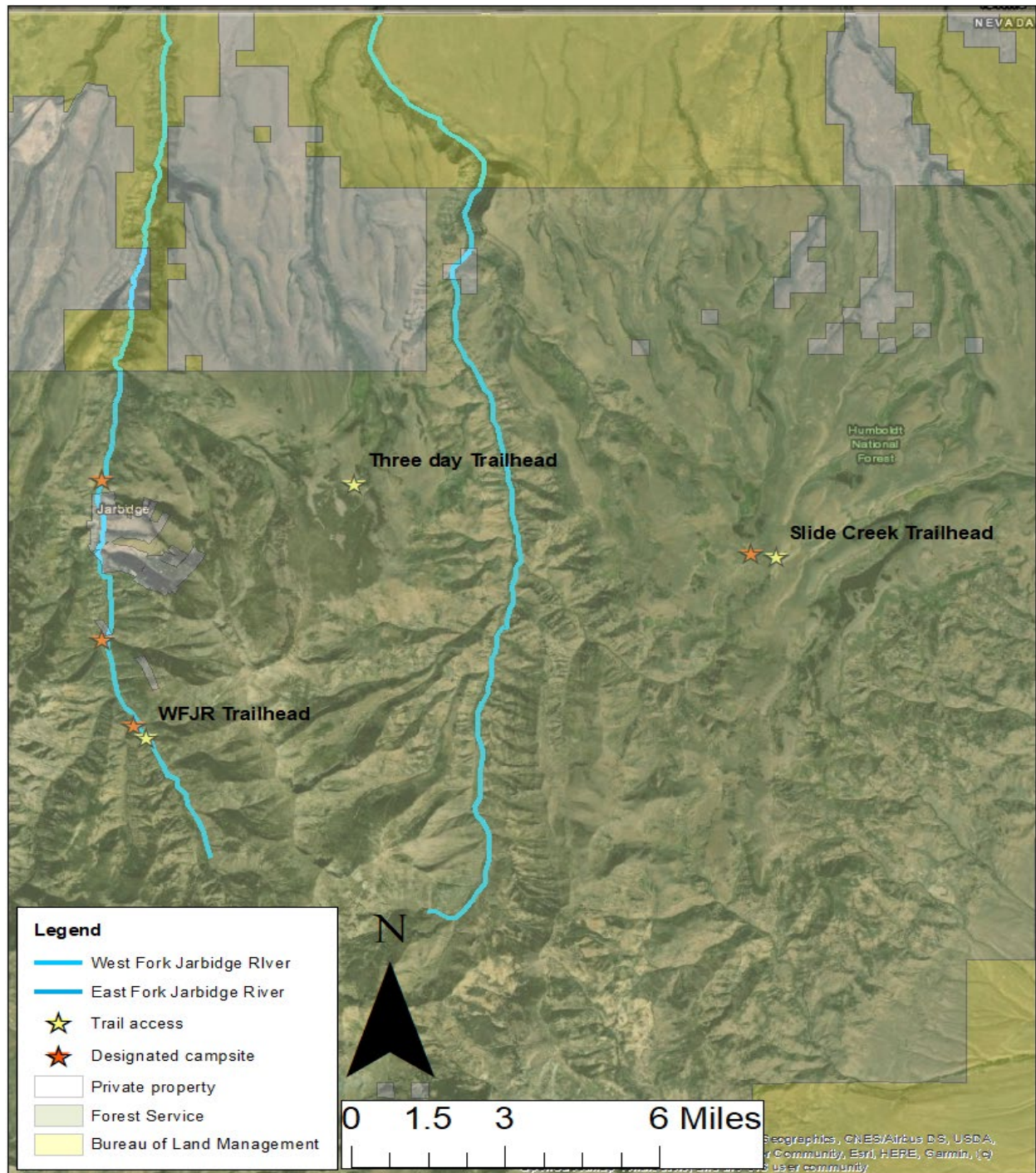
The Jarbidge River basin is at 103% of normal for February 1, 2025. This will likely cause high flows through early summer. In an average year, such as 2025, the Jarbidge River should produce optimal fishing conditions beginning in early July. Snowdrifts, especially on north facing slopes, may limit access on some roads and trails in the early season.

### Trout Fishing

**Bull Trout:** Fishable populations of Bull Trout are found in the WFJR, EFJR, Pine Creek, Dave Creek, and Jack Creek. Bull Trout typically inhabit the upper headwater reaches where cold water is most abundant. This means hiking a minimum of a couple miles from the trailhead before you start fishing. The 2025 angling forecast for Bull Trout is fair. A decline in abundance and distribution paired with potential tough river conditions early in the year will add some difficulty for anglers. Individuals willing to hike to the better habitat and try multiple different streams will likely have the best luck. Snow drifts could still be present on trails until July.

**Redband Trout:** Redband Trout are found in relatively high abundances throughout the EFJR and WFJR and their respective tributaries. Distribution is very widespread from the upper watersheds to the lower reaches of the system. The 2025 angling forecast for Redband Trout in the Jarbidge River is fair to good. Average stream flows along with good abundances and distribution, opportunities should be very high for encountering Redband Trout.

**Mountain Whitefish:** Mountains Whitefish are found in the WFJR and are commonly found in the river stretches around the town of Jarbidge. Densities are low in the WFJR and the 2025 angling forecast is poor to fair, so anglers wishing to target Mountain whitefish will need to fish a high number of runs and be patient. Opportunities to encounter Mountain Whitefish are limited and likely a result of random luck. Anglers wishing to specifically target Mountain Whitefish should consider fishing the Bruneau River.



Several designated Forest Service campsites are found along the Jarbidge River (red stars) there is also some primitive camping opportunities located along major roadways along the EFJR and WFJR. Designated trailheads (yellow stars) are the easiest way to access the wilderness. The trailheads labeled on the map are the most frequently used and maintained. Additional trail information and more detailed trail maps can be found by contacting the US Forest Service Jarbidge Ranger District office at 775-738-5171.