

# WHITES AND THOMAS CREEKS



## **ANGLER AND FISH SURVEY INFORMATION** **Sam Sedillo - Fisheries Biologist, Reno Office** **1100 Valley Rd, Reno, NV (775) 688-1882**

**General information:** Both Whites and Thomas Creeks originate from the east side of the Carson Range at approximately 9,000 feet. At 6,000 feet, the creeks leave the Carson Range and flow onto the upper slopes of the Truckee Meadows and ultimately empty into Steamboat Creek. On their way down the mountain, each creek runs through a matrix of U.S. Forest Service land and private property. By the time the creeks reach US 395, they are fairly channelized and provide poor habitat for trout. Current sport fish present include Brook and Rainbow Trout. Brook Trout tend to be found in the higher elevations, while Rainbow do better in the lower reaches. The trout population in the upper section of Whites Creek (above Timberline Drive) is fairly low, which is probably due to the high gradient and scarcity of pools. Thomas Creek exhibits abundant populations of both Rainbow and Brook Trout. Primitive camping is allowed on public land.

**Location and Access:** Whites and Thomas Creeks run parallel to the Mount Rose Highway (SR 431) with Whites Creek being just north of the highway and Thomas Creek running north of Whites Creek. Turn right onto Timberline Road, then left on Whites Creek Road. Whites Creek Road is the last road prior to the bridge over Whites Creek. This is a very rough road and only goes for about ¼ mile before being blocked. To get to Thomas Creek, continue on Timberline Drive for another ½ mile and follow the road as it turns west and parallels the creek.

**Management:** Whites and Thomas Creeks are managed as put and take fisheries for trout while maintaining the opportunity to catch wild fish.

### General Info

- Cutthroat Trout were stocked between 1951 and 1966, and Rainbow Trout have been stocked annually since 1951.
- Flows may be extremely high through the spring and into early summer but look for fishing to improve as those flows recede.
- Please clean, drain, and dry any gear you bring into Thomas and Whites Creeks to stop aquatic hitchhikers and invasive species.

### Fishing Regulations

- General regulations apply. Limit is 5 trout. Open year around, any hour of the day or night.

### Previous stocking

#### **2024**

Rainbows (Whites)	315	9 Inches
Rainbows (Thomas)	945	9 Inches

#### **2022**

Rainbows (Whites)	121	8-12 Inches
Rainbows (Thomas)	303	8-12 Inches

#### **2021**

Rainbows (Whites)	174	8-12 Inches
Rainbows (Thomas)	1307	8-12 Inches

#### **2020**

Rainbows (Whites)	439	8-12 Inches
Rainbows (Thomas)	915	8-12 Inches

#### **2019**

Rainbows (Whites)	402	8-12 Inches
Rainbows (Thomas)	813	8-12 Inches

### Fishing notes

- Due to limited habitat and food sources, fish will readily take small lures and flies presented to them with and ultralight rod.
- Early season fishing when flows are high can be difficult, so use heavier weight to get your lure, bait or fly to the fish.
- Example bait and tackle include nightcrawlers, powerbait, panther martins, kastmasters, pheasant tails, wooly buggers, and Adams Dry Flies.

# WHITES AND THOMAS CREEKS

2025 Fishing Forecast  
Sam Sedillo – Fisheries Biologist  
Reno Office



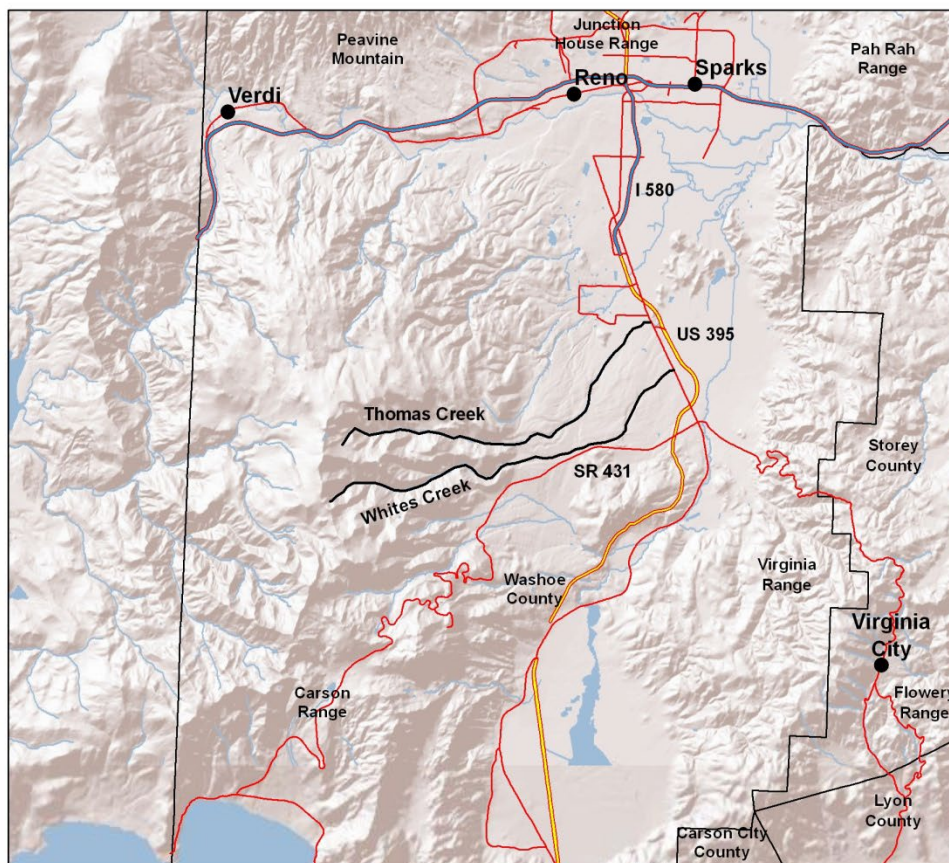
**Water levels** - Whites and Thomas Creeks will have good flow throughout the 2025 season due to snowpack in the Sierra's making fishing accessible to anglers.

## Rainbow Trout

In 2024, there were 315 Rainbow Trout stocked in Whites Creek and 945 stocked in Thomas Creek. Rainbow Trout thrive in the cold water in these creeks from spring until fall. Rainbow Trout in the creeks average 8"-12" but there is the opportunity to catch a larger holdover trout that survives in the system. Use small flies or lures such as panther martins, cast masters, pheasant tails, and Adams dry flies for the best success while targeting these fish. Small ultralight rods are preferable for fishing these creeks.

## Brook Trout

Brook Trout thrive in the higher reaches of these creeks and are self-sustaining throughout the system. The average Brook Trout size in the creek is small, around 8-10 inches due to the high elevations of the creek. Don't let their size keep you away, they are one of the most colorful and beautiful fish we have in Nevada. With both creeks sitting at high elevations, Brook Trout will feed ravenously to bulk up for the winter before major snowfall. For best success, use small lures or flies when targeting Brook Trout.



No warranty is made by the Nevada Department of Wildlife as to the accuracy, reliability, or completeness of these data for individual use or aggregate use with other data.